

# BC-5140

## Auto Hematology Analyzer

### Technical Specifications:

#### Principles

Flow Cytometry (FCM) +Tri-angle laser scatter method for WBC 5-part differential analysis and WBC counting

Impedance method for RBC and PLT counting

Cyanide free reagent for hemoglobin test

#### Parameters

25 reportable parameters: WBC, Lym%, Mon%, Neu%, Bas%, Eos%, Lym#, Mon#, Neu#, Eos#, Bas#, RBC, HGB, HCT, MCV, MCH, MCHC, RDW-CV, RDW-SD, PLT, MPV, PDW, PCT, P-LCR, P-LCC.

12 Research parameters include LIC%, LIC#, ALY%, ALY#, PLT

Clumps#, PLT Clumps%, Lip#, Lip%, NRBC#, NRBC%, Blast#, Blast%

3 histograms for WBC, RBC and PLT

3 scattergrams for WBC differential

#### Reagent

M-52D Diluent, M-52DIFF lyse, M-52LH lyse, probe cleanser

#### Performance

Parameter	Linearity Range	Precision	Carryover
WBC	0-500×10 <sup>9</sup> /L	≤2% (4-15×10 <sup>9</sup> /L)	≤0.5%
RBC	0-8×10 <sup>12</sup> /L	≤1.5% (3.5-6.0×10 <sup>12</sup> /L)	≤0.5%
HGB	0-250g/L	≤1.5% (110-180g/L)	≤0.6%
PLT	0-5000×10 <sup>9</sup> /L	≤6.0% (100-149×10 <sup>9</sup> /L) ≤4.0% (150-500×10 <sup>9</sup> /L)	≤1.0%

#### Sample Volume

Prediluted mode	20 µL
Whole blood mode	15 µL
Capillary whole blood mode	15 µL

#### Throughput

60 samples per hour

#### Display

10.4 inch TFT Touch Screen

#### Multi-language

English, Spanish, Portuguese, Russian, French

#### Data Storage Capacity

Up to 200,000 results including numeric and graphical information

#### Communication

LAN Port supports HL7 protocol

#### Interface

USB, LAN

Support bi-directional LIS

#### Printout

External Thermal printer/Laser printer / Inkjet printer, various printout formats and User-defined formats

#### Operating Environment

Temperature: 10°C~30°C

Humidity: 20%~85%

Air pressure: 70kPa~106kPa

#### Power requirement

100V-240V

50Hz/60Hz

#### Dimension and Weight

Depth\*width\*height: 400mm\*320mm\*410mm

Weight: 24kg

ISO 9001 : 2015  
EN ISO 13485 : 2016



Toll Free No: 1800 425 7151

**AGAPPE DIAGNOSTICS LTD.**

Corporate off: / Factory: "Agappe Hills", Pattimattom (PO), Dist. Ernakulam, Kerala - 683 562, India.

TEL: + 91 484 2867000 | FAX: +91 484 2867222 | productcorp@agappe.in | www.agappe.com

**YOUR BEST PARTNER IN DIAGNOSTICS**

ADL/BR/BC5140/R00-09/18 Company reserves the right to change any design and technical features of the product at any time, if needed.



**AGAPPE**

# BC-5140

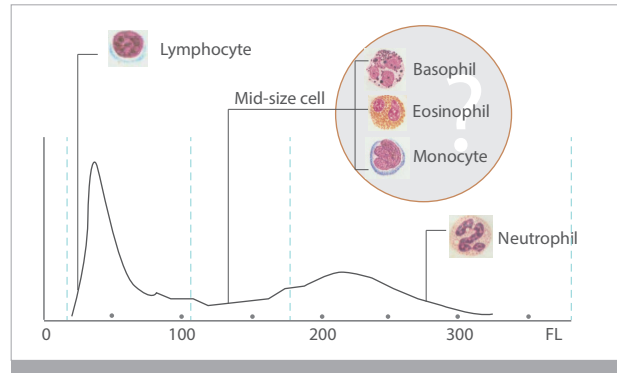
## Auto Hematology Analyzer

## A "CUTE" 5-Part



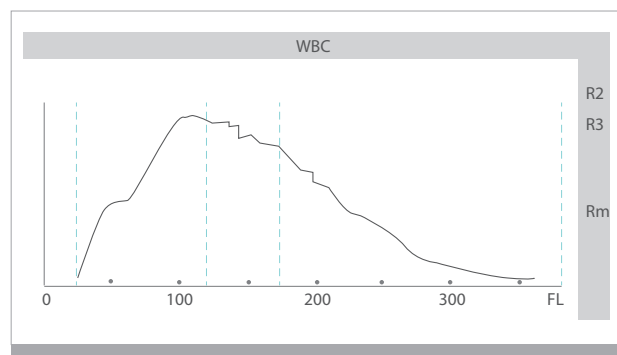
# Why do we need 5-part hematology analyzers?

WBC differential: 3-part



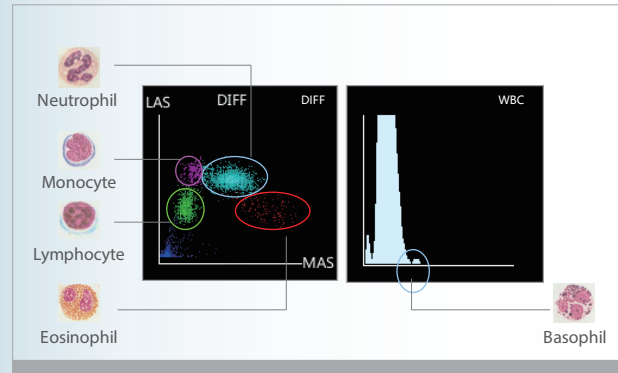
3-part hematology analyzers can not differentiate Basophil, Eosinophil and Monocyte. Additionally, Lymphocyte and Neutrophil results are easily affected by abnormal cells.

Flag information: 3-part



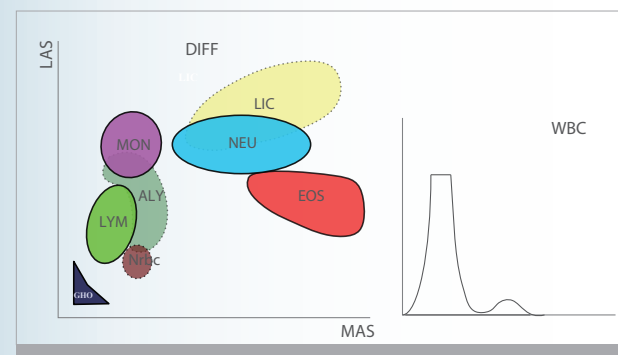
WBC histogram only indicates regional abnormal graph, it can't bring specific flags for different clinical cases.

WBC differential: 5-part



5-part hematology analyzers can provide Lymphocyte, Monocyte, Neutrophil, Eosinophil and Basophil results for every sample. Additionally, the 5-part results are less affected by abnormal cells.

Flag information: 5-part



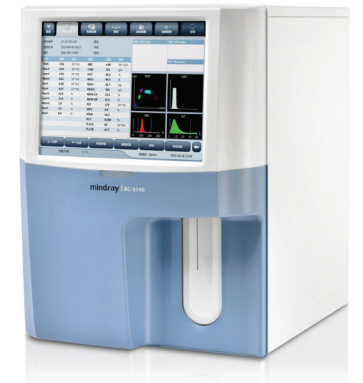
5-part hematology analyzers provide more detailed and specific flag information. Users are able to clearly understand the clinical significance of flags and make a decision.

## BC-5140 Auto Hematology Analyzer

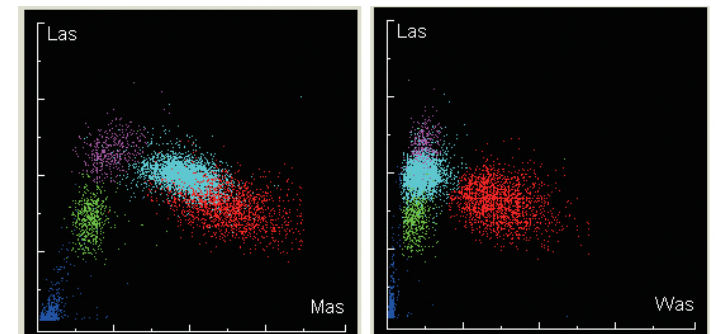
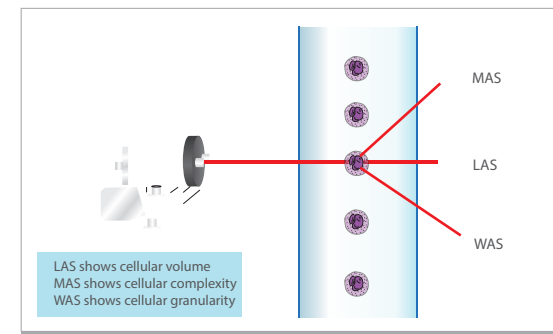
BC-5140 is especially tailored to assist diagnostic labs who need full CBC + 5-part results, with relatively low daily sample volume, restricted lab space and tight budget.

As the lightest and most compact 5-part hematology analyzer, BC-5140 is a highly user-friendly and innovative analyzer that offers cost efficient CBC and 5-part white cell differential results. It is targeted to fulfil and exceed the demands of our global customers by providing more accurate, more efficient and more innovative solutions for labs.

- WBC 5-part differentiation, 25 reportable parameters and 12 research parameters, 3 histograms and 3 scattergrams Whole blood mode, Capillary whole blood mode and Prediluted mode
- Tri-angle Laser scatter + Flow cytometry technology
- Dedicated optical counting channel for Basophil measurement
- Powerful capability of flagging abnormal cells
- 10.4-inch large TFT touch screen with user-friendly software
- Large storage capacity: up to 200,000 samples
- Throughput: 60 samples per hour
- Sample volume is only 15µ L which is ideal for pediatrics



Tri-angle laser scatter + focused flow + chemical dye, creating the possibility for a better 5-part WBC differentiation even on samples with high Eosinophil.



Users are able to access our tailored innovation and intelligent diagnosis support to safeguard their diagnoses decisions with maximum confidence.

*Offers a great solution for clinical labs, especially for those who have limited space. Its compact footprint is a result of innovative technology improvements, including miniaturized semi-conductor laser source, highly integrated electronic boards and optimized liquid handling system.*



BC-5140, the 5-part hematology analyzer offers a great solution for clinical labs, especially for those who have limited space. Its compact foot-print is a result of innovative technology improvements, including miniaturized semi-conductor laser source, highly integrated electronic boards and optimized liquid handling system.



Compact

Two kinds of lyse reagents are located inside of BC-5140, which helps the small labs to save space.



Utility

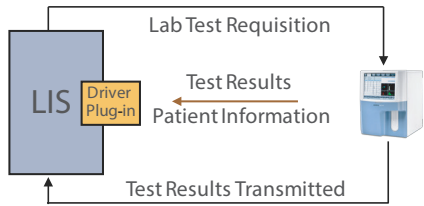
The 10.4 inch TFT touch screen with a wide viewing angle, brings convenience to clinicians. Users can complete all instrument operations on the screen, practically eliminating the need for an external PC.



Running capillary blood through the sample probe directly is more convenient for the users in children’s hospitals, etc. For Prediluted mode, BC-5140 has higher dilution ratio than other 5-part hematology analyzers, thus it brings a better mixing effect.



4 USB ports are located on the instrument’s left side. They permit BC-5140 users to transmit data conveniently and connect with printers, keyboard, mouse, barcode scanner, etc.

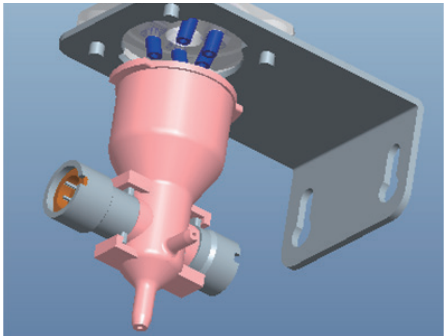


BC-5140 supports bi-directional LIS with test results and patient information. HL7 protocol is supported as well.



Technology

Compared with traditional helium neon laser or argon laser, semi-conductor laser has smaller size, lower cost and longer life cycle.



Improved DC impedance technology is used to count and size the RBC and PLT. The smaller counting aperture (50µm in diameter) provides better performance on samples with low PLT.



Efficient

Only three routine reagents are required. These have 2 years shelf life and also less consumed by BC-5140. Original QC and calibrator are also provided to ensure the hematology analyzer’s traceability and testing quality.