

 **Q-line**[®] *Rapid*

Malaria

***P. f.*–*P. v.* & *P. f.*–PAN**

A Rapid Immunochromatography test based on Lateral flow technology

What is Malaria?

Malaria is a life-threatening disease caused by **Plasmodium parasites** (*P. Falciparum*, *P. vivax*, *P. Malariae*, *P. ovale*, *P. knowlesi*) that are transmitted to people through the bites of infected female Anopheles mosquitoes. It is preventable and curable. In 2019, there were an estimated **229 million cases** of malaria worldwide. The estimated number of malaria deaths stood at 409 000 in 2019. Children aged under 5 years are the most vulnerable group affected by malaria; in 2019, they accounted for 67% (274 000) of all malaria deaths worldwide. The WHO African Region carries a disproportionately high share of the global malaria burden. In 2019, the region was epicenter for 94% of malaria cases and deaths.

60% of Malaria cases in India occur in 5 States

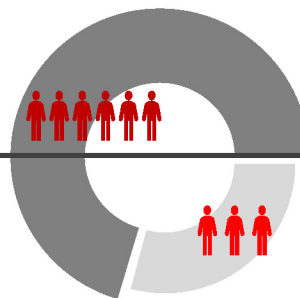
5.6 million Total Cases In 2019

Orissa, Chhattisgarh, Madhya Pradesh, Jharkhand, West Bengal.

Other highly endemic states include Arunachal Pradesh, Assam, Meghalaya and Tripura.

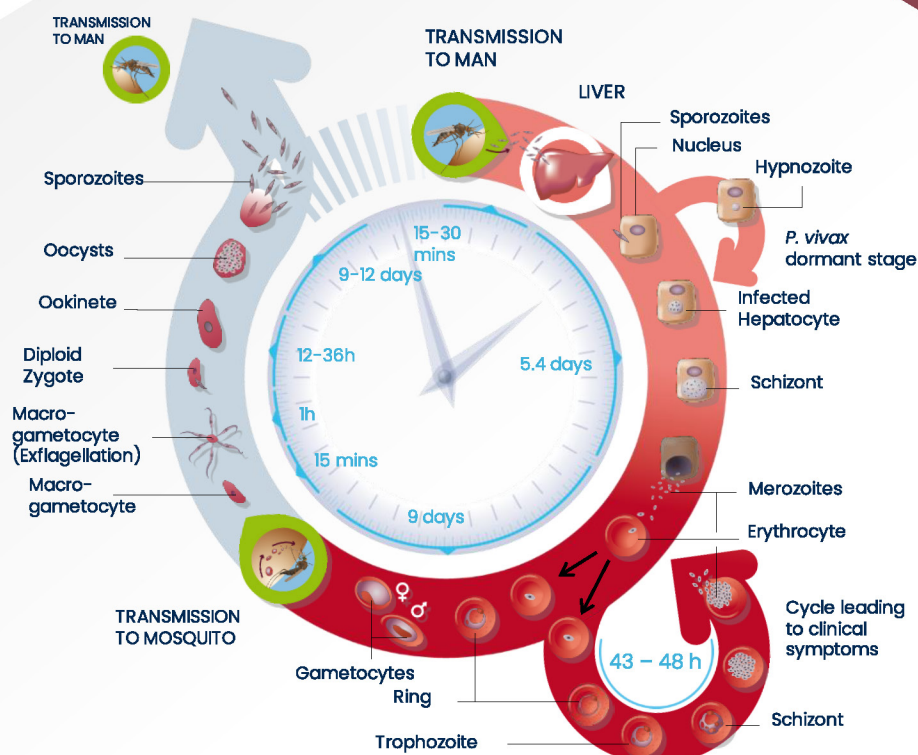
>2/3

Indian share in total Malaria cases of South-East Asia Region



Source: World Malaria Report 2020 by WHO

Life cycle of Malaria Parasite





What We Provide



Accurate

- ICMR(NIMR New Delhi) Validated



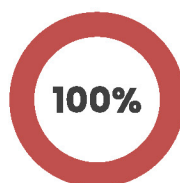
Fast

- Results in 20 minutes



Efficient

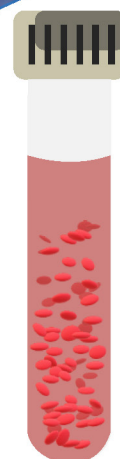
- Only 5 µl sample required
- Can be used as POC test



Diagnostic Sensitivity



Diagnostic Specificity



<200

PARASITES NECESSARY
PER MICROLITER TO
DETECT MALARIA

Q-Line Rapid Malaria *P.f.-P.v.* Antigen

R

5

20

24

MFV-025/050PS

Description: Rapid lateral flow assay for the detection of *P. falciparum* & *P. vivax* parasites

Pack Size: 25/50 Tests

Sensitivity: 100%

Specificity: 100%

Q-Line Rapid Malaria *P.f.-P.v.* Antigen (Point-of-care)

R

5

20

24

MFVRP001PS

Description: Rapid lateral flow assay for the detection of *P. falciparum* & *P. vivax* parasites

Pack Size: Single Test

Sensitivity: 100%

Specificity: 100%

Q-Line Rapid Malaria *P.f.-PAN* Antigen

R

5

20

24

MFP-025/050PS

Description: Rapid lateral flow assay for the detection of *P. falciparum* & PAN Plasmodium parasites

Pack Size: 25/50 Tests

Sensitivity: 100%

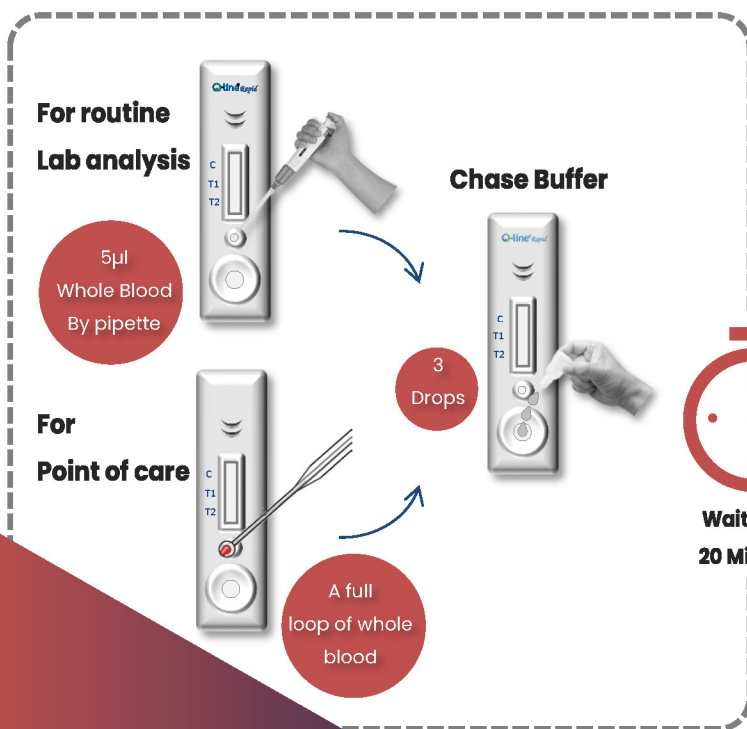
Specificity: 100%



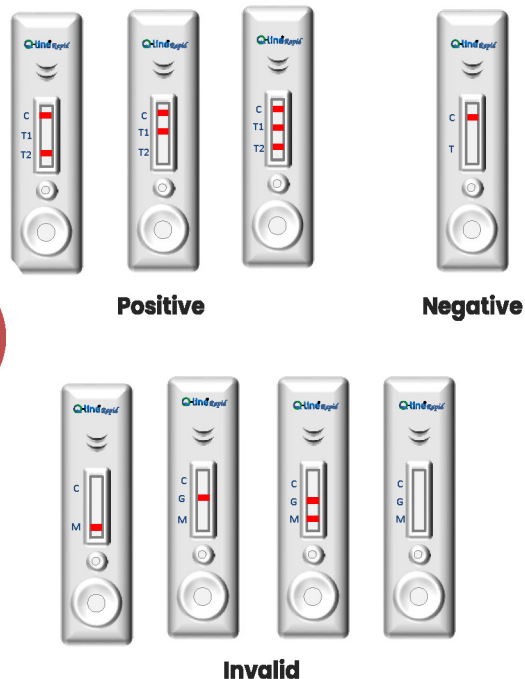
● Assay Type: R=Rapid Immunochromatography assay, E=ELISA (Enzyme Linked Immuno-Sorbent Assay)

● Whole Blood Sample Volume in µl; ● Serum Sample Volume in µl; ● Assay Time- In minutes; ● Max. Shelf Life – In Months

Q-line Rapid assay outlines



Result Interpretation



Contact Us:



1800 123 0079 (Toll free)

+91-11-45577407



Q-LINE BIOTECH PVT. LTD.

(Formerly known as POCT Services Pvt. Ltd.)

Corporate Office:

20A, Basement, Chhatrapati Shivaji Marg,
Najafgarh Rd, Near Haldiram, New Delhi-110015



salse@qlinebiotech.com
customer@qlinebiotech.com



www.qlinebiotech.com

