



ADX-CHEM-220



Semi-auto Chemistry & Coagulation Analyzer

For people who trust quality



Features

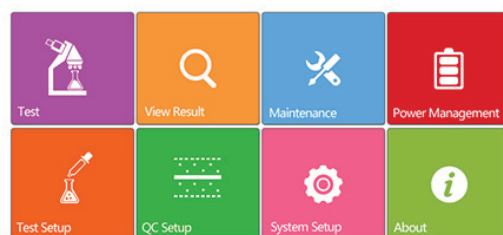
- Windows based, 7.0" inch true colour elegant display with touch screen
- Large memory, over 300 programs and 2,00,000 test results
- Inbuilt multifunctional incubator & blood coagulation function
- Long Life Halogen lamp with auto sleep function
- Powerful QC function: Levey Jennings plot with Westgard multirule
- Supports USB, mouse, keyboard and barcode scanner for easy operation
- Onboard thermal printer, supports external USB printers



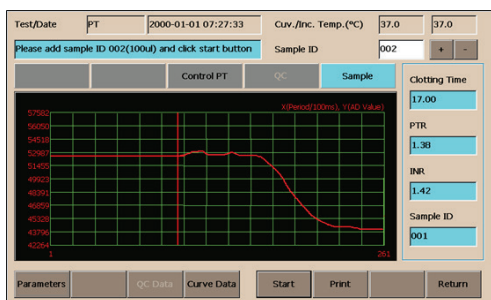
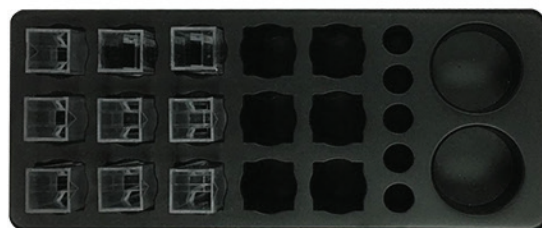
Technical Specifications

Analysis method:	1 point end, 2 point end(Sample blank), Kinetics, Fixed-time. Coagulation
Optics:	7 standard filters: 340, 405, 450, 505, 546, 578, 630. 2 more for optional
Lamp house:	Long-life tungsten halogen lamp(6V/10W), auto-sleep function
Display:	7.0" TFT LCD with touch screen, 800*480 pixels
Printer:	Build-in thermal printer, 57mm printer paper
Temperature:	25, 30, 37°C and Room temperature. By means of Peltier elements
Flow cell capacity& optical path:	32ul, 10mm
Resolution:	0.0001 Abs
Photometric range:	0.001-4.000 Abs
Incubator:	Inbuilt multifunctional incubator
Incubator Temperature:	37°C
Memory:	Over 300 programs, 200000 results can be stored
Interface:	4 USB Host; 1 USB Slave; 1 Ethernet port USB port(host) for keyboard, mouse, printer, U disk, bar code reader etc.USB port(slave) for PC connection (support PC software control function)
Operational Env't:	Temperature: 10°C ~ 30°C; Humidity: 30%-80%
Power requirement:	Wide power supply AC100-240V, 50/60Hz
Dimension:	400 x 300 x 160mm(L x W x H)
Weight:	7.5Kg

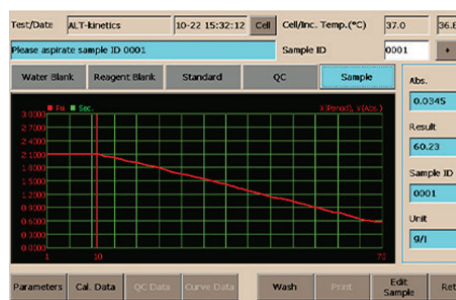
Main Menu



Multifunctional Incubator



Coagulation assay curve



Chemistry assay curve