

***A STRATEGIC LINE-UP
TO CHASE CLEAR RESULTS***



AESKUBLOTS®

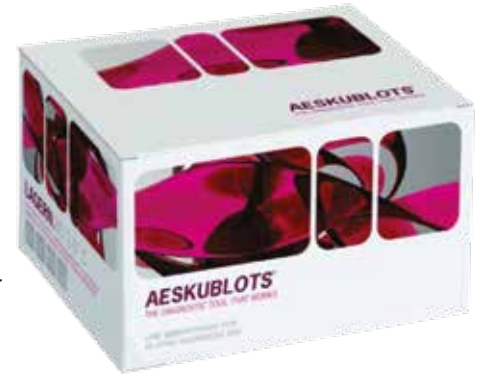
- * ANA blot with Myositis profile: Detection of multiple antigens in one test.
- * Cost-Effective diagnosis and differentiation of various diseases.
- * Specific and ideal test for monitoring the disease.
- * Kits can be automated on Helmed and Helia instruments.

AESKUBLOTS®

ANA Immunoblot with Myositis profile

Immunoblot for the qualitative / semi-quantitative detection of IgG antibodies against:
dsDNA, nucleosomes, histones, SmD1, PCNA, P0, SS-A/Ro60kD, SS-A/Ro52kD, SS-B/La, CEN-B, Scl-70, U1 snRNP, AMA M2, Jo-1, Pm-Scl, Ku and Mi-2 in human serum or plasma.

- Myositis specific antigens Jo-1, Pm-Scl, U1-snRNP, Mi-2, Ku can be detected along with the other ANAs, which helps in myositis sample with ANA negative immunofluorescence results.
- Mi-2, Ku are very specific antigens for Myositis not provided by many other manufacturers in the market.
- 17 important ANA antigens suitable for multianalyte analysis and differential diagnosis of diseases
- Clear Bands without any unspecific background.
- Most pure dsDNA is coated on the strip as one of the antigen giving very specific results.



AESKUBLOTS® ANA-17 Pro (REF 4001)

SLE, MCTD

Polymyositis, Dermatomyositis,
Polymyositis / scleroderma overlap syndrome

Primary Biliary Cirrhosis

Scleroderma, CREST syndrome

Sjogrens syndrome (SGS)

Sensitivity & Specificity

Sensitivity : 99.1 %

Specificity : 98 %

User Friendly kits

- Ready to use reagents
- Color coded strips for traceability
- Inbuilt procedural & cut -off control.
- Kit provided with all required accessories along with reagents.
- Easy assay procedure

Myositis Specific Antibodies (MSA) & Myositis Associated Antibodies (MAA) are of fundamental importance in the diagnosis of Polymyositis (PM), Dermatomyositis (DM), and inclusion body myositis. They are a tool for diagnosis and patient classification and provide an insight into the pathogenesis of these conditions

ANTI-Mi2 ANTIBODY

Clinical Significance

- Mi2 is one of the important protein in transcription regulation found in the nucleus.
- It is "Myositis-Specific Antibody"(MSA) (*It is extremely rare to find these antibodies in patients without myositis, even if they have another muscle or autoimmune disease.*)
- MSA are found almost exclusively in patients with DM/PM and associated overlap syndromes
- Most Specific serological markers of Dermatomyositis (DM).

Occurrence

- 15-20 % Dermatomyositis with a high diagnostic specificity. 95 % of patients with Mi-2 antibodies suffer from dermatomyositis.
- Important for differential diagnosis as they rarely occur in polymyositis.

Anti-Ku Antibody :

Clinical Significance

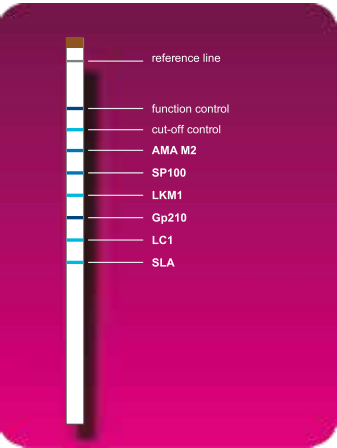
- It is one of the **Myositis Associated Antibodies (MAA)** having fundamental role in DNA repair, V(D)J recombination, telomere protection .
- Anti-Ku antibodies are reported in various connective tissue diseases and the Ku complex can be responsible for a very strong autoimmune answer in autoimmune disease.
- It is postulated that these antibodies could be found in 55% overlap polymyositis/systemic sclerosis patients.

Occurrence

- 5-25 % :- Polymyositis and scleroderma overlap-syndrome .
- 1-7 % :- Myositis .
- 20 % :- Primary Sjögren's syndrome
- 20 % :- Primary pulmonary hypertension
- 5-10 % :- SLE .

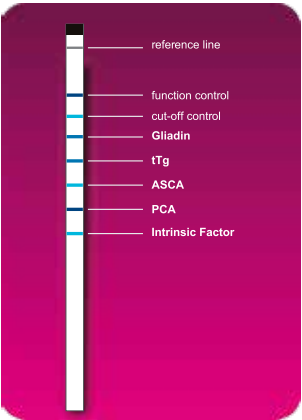
Complete Immunoblot Range

AESKUBLOTS® Liver Pro REF (4004)/ 24 tests/ IgG Detection



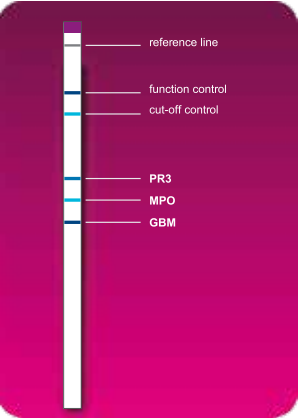
Antigen coated	Associated disease
AMA-M2	Primary Biliary Cirrhosis (PBC)
Sp100	Primary Biliary Cirrhosis (PBC)
LKM1	Autoimmune Hepatitis (AIH)
gp210	Primary Biliary Cirrhosis (PBC)
Lc1	Primary Biliary Cirrhosis (PBC)
SLA	Autoimmune Hepatitis (AIH)

AESKUBLOTS® Gastro Pro (REF 4005)



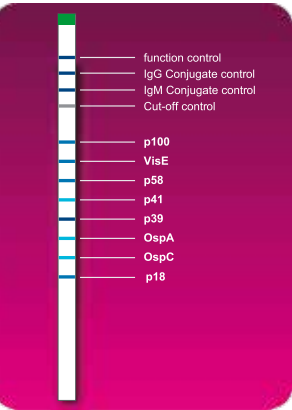
Antigen coated	Associated disease
Gliadin	Celiac Disease
tTg	Celiac Disease
ASCA	Crohn's Disease
PCA	Pernicious Anemia
Intrinsic Factor	Pernicious Anemia

AESKUBLOTS® Vasculitis Pro (REF 4002)



Antigen coated	Associated disease
Pr3	Wegener's granulomatosis
MPO	vasculitis-associated rapidly progressive glomerulonephritis, Churg-Strauss syndrome
GBM	Autoimmune Hepatitis (AIH)

AESKUBLOTS® Borrelia G (REF 4006) and AESKUBLOTS® M (REF 4007)



Antigen coated	Associated disease
P100	IgG type antibodies and only appear in the chronic stage of the infection
VisE	Surface protein antigen
P58	Specific when found with the antibody for some other antigen
P41	Flagellin protein. Not specific to B. burgdorferi. It occurs both in late and early stages
p39	Highly specific marker of early stage infection
OspA, OspC	Surface protein, specific for the early infection
p18	Specificity is not ensured, an isolated occurrence is not proof of a Borrelia infection



Process Samples



Create Worklist



Print Worklist Template



Fix Strips and Scan Worklist Template



View Automatically Interpreted Results



Print Report or Save as PDF



WHAT IS AESKUSCAN?

AESKUSCAN is a software designed specifically for semi-automated analysis of Aeskublots (Immunoblot) reagents. This software uses the latest technology and provides a very accurate interpretation of the image with a highly sensitive detection of band intensity.

HOW DOES IT WORK?

1. Create an electronic worklist in just a few seconds.
2. Print the worklist template (barcoded with ID for automatic recognition after scanning).
3. Attach the Aeskublots immunoblot strips to the above template and then scan it.
4. Review automatic interpretation of results
5. Select report and print or save electronically.

WHAT ARE THE BENEFITS?

- **Standardization:** Aeskuscan brings consistency to the laboratory thanks to the automated interpretation process.
- **Accuracy:** High sensitivity in band detection combined with outstanding correlation with the cut-off ensures accuracy of results
- **Easy to Use:** The worklist is prepared in seconds and works securely thanks to the barcoded worklist template function.
- **Improve Lab Accreditation:** Improve your lab efficiency, standardization and accreditation. With this software developed in accordance with IVD 98/79/EC Standards.

Complete Hands On training

+

Aeskuscan Software

+

Canon Lide Scanner

+

Immucheck Rocking Platform

In just ₹ 50,000/-

Please get back for complete setup of Immunoblot at your Lab.

Ref. HEL-8001 AESKU.SCAN BLOT INTERPRETATION SOFTWARE

Minimum PC Requirements:

- PC with 2.0 GHz processor Intel-/AMD • 2 GB of RAM • Min. 100MB freehard disk space
- Operating system: Windows XP, Windows 7, WindowsVista, (32/64- bit version) • 2 x USB ports