

Sys 1000^{NEW}

Auto-Chemistry Analyzer

Overall performance	
Equipment type	Fully automatic, discrete, STAT priority
Throughput	600T/H for photometry tests, 1000 T/H with ISE
Test principle	Colorimetry, turbidimetry, ISE
Analysis method	End-point, kinetics, fixed-time, etc. support single/double wavelength
Simultaneous analysis item	110 colorimetric items and 3 ISE items (K, Na, Cl optional)

Sample unit	
Sample position	115 sample positions
Sample volume	1.5μL~35μL, 0.1μL stepping
Sample cuvettes specification	Standard cup, original blood tube, multi-specification tube availabe (Φ10~13) mm × (75~100) mm
Sample barcode	code 128, code 39, code 93, 12of5, UPC/EAN
Sampling technology	Liquid level detection, clot detection and collision protection

Reagent unit	
Reagent probe	Liquid level detection and collision protection
Reagent volume	20μL~350μL, 1μL stepping
Reagent position	Double reagent disk up to 112 positions
Reagent barcode	Code128

Reaction unit	
Reaction cuvette	120 positions optical plastic cuvettes
Total volume of reaction liquid	120μL~450μL
Reaction temperature	37°C±0.1°C
Reaction disk constant temperature	Circulating water
Mixing needle	Blending immediately after joining reagent
Reaction cuvette cleaning	7 stops 11 steps by warm water rinsing
Wastewater treatment	Two diffuence for high and low concentration waste water
	With the function of concentrated waste liquid level alarming



Optical system	
Light source	20W/12V halogen lamps
Monochromator	Grating photometry
Photoelectron road	Rear spectrophotometry
Wavelength	340nm~800nm
Detector	Photodiode LED array
OD linear range	0~3.6Abs

Calibration and QC	
Calibration method	1 point linear method, 2 point linear method, multiple point linear method, non-linear method
Calibration tracking	Automatic description calibration K-value trends
QC method	Real-time QC, daily QC and monthly QC
Out of control processing	Alarming for out of control sample, record lost control reason

Operating system	
PC operating system	Windows 7/ Windows10 operating system
Analysis control software	English version graphical operating software
Report printing	Report formats support the user-defined mode
	QC and state information etc.
System connection	RJ45 network interface

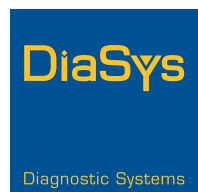
Others	
Volume	1060mm×790mm×1150mm(L×W×H)
Weight	300Kg
Power supply	Voltage AC 220±22V,50Hz±1Hz,power 2000VA



**COMPACT SIZE WITH
ROBUST FUNCTIONS**

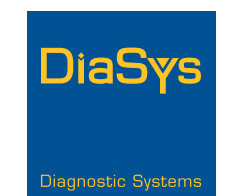
Sys 1000^{NEW}

Auto-Chemistry Analyzer

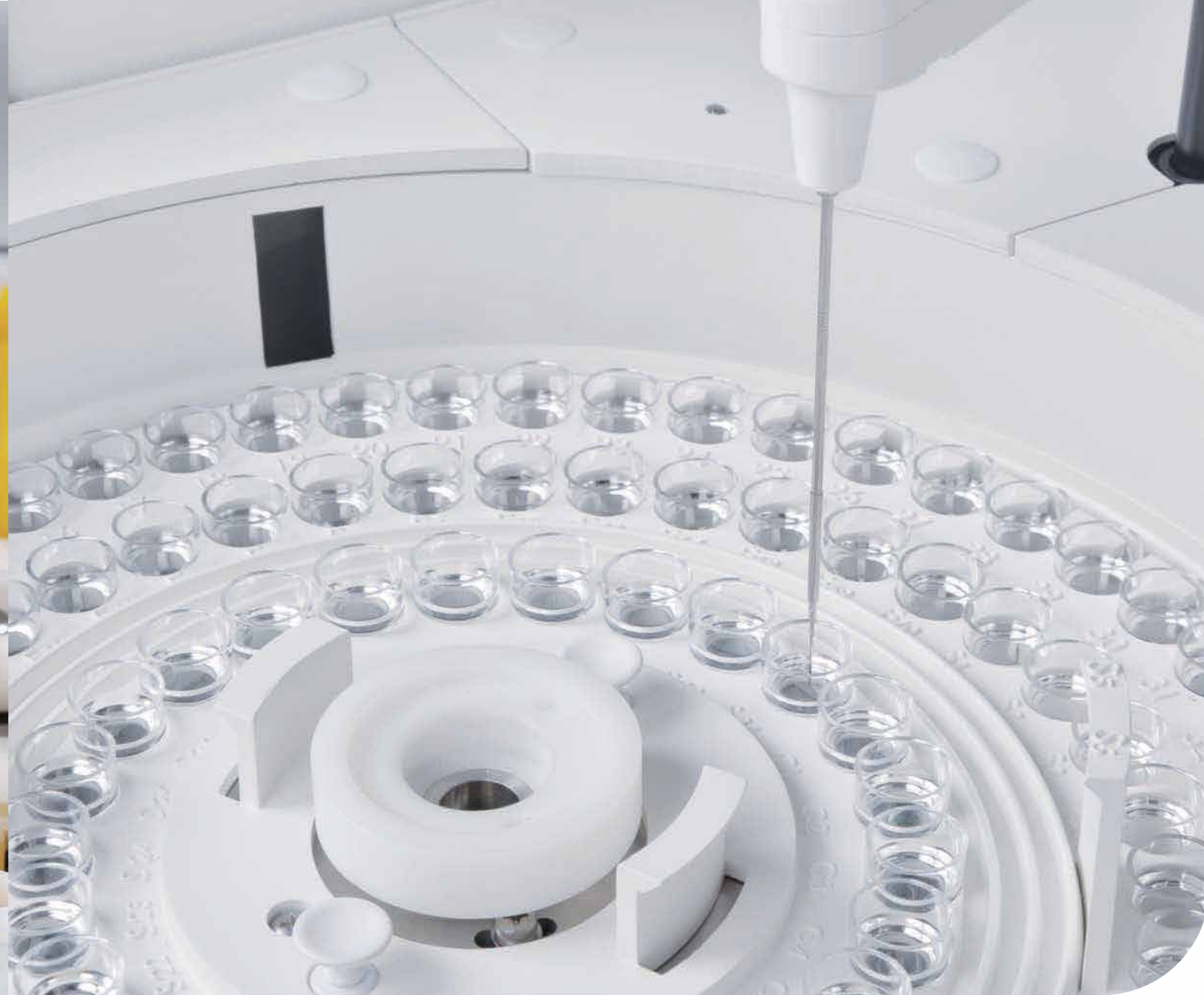
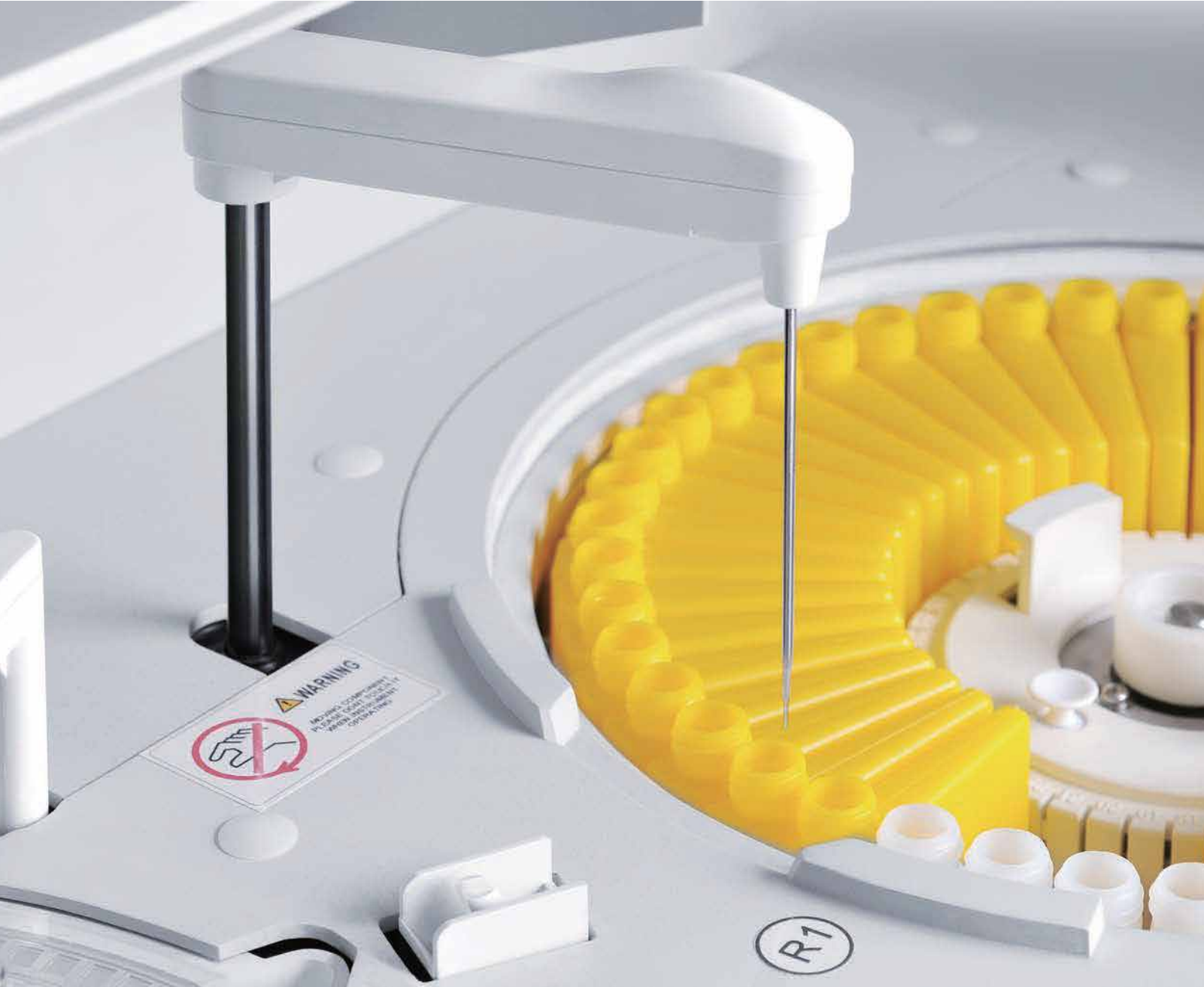


DiaSys
Diagnostics India Private Limited
Plot No. A-821, TTC Industrial Area,
Mahape, Navi-Mumbai, 400710,
Maharashtra, India.

Toll free: 1800 120 1447
E-Mail : info@diasys.in
www.diasys.in



CHOOSING QUALITY.



THE ON-BOARD HEMOLYSIS FUNCTION

- NGSP certification of whole blood latex-agglutination method on analyzer
- Whole blood testing function for HbA1c to avoid artificial error
- Not necessary for centrifugation
- Automatically hemolysis function, easy operation and standardization for HbA1c test

HIGH CAPACITY

- Up to 115 elastic design sample positions, suitable for different size of tubes
- 112 oblique design reagent positions for full use reagent to save reagent and cost

ACCURATE RESULT

- 340-800nm 12 wavelengths
- Digital liquid level detection high sensitivity avoids bubbles' interference
- Reagent inventory management, automatically calculate remaining volume and remaining number

EXCELLENT PERFORMANCE

- Automatically cuvette checkup ensure the cuvette clean
- Collision Protection

SAVE TIME AND COST

- Optical diameter 5mm
- Minimum reaction volume 120μL

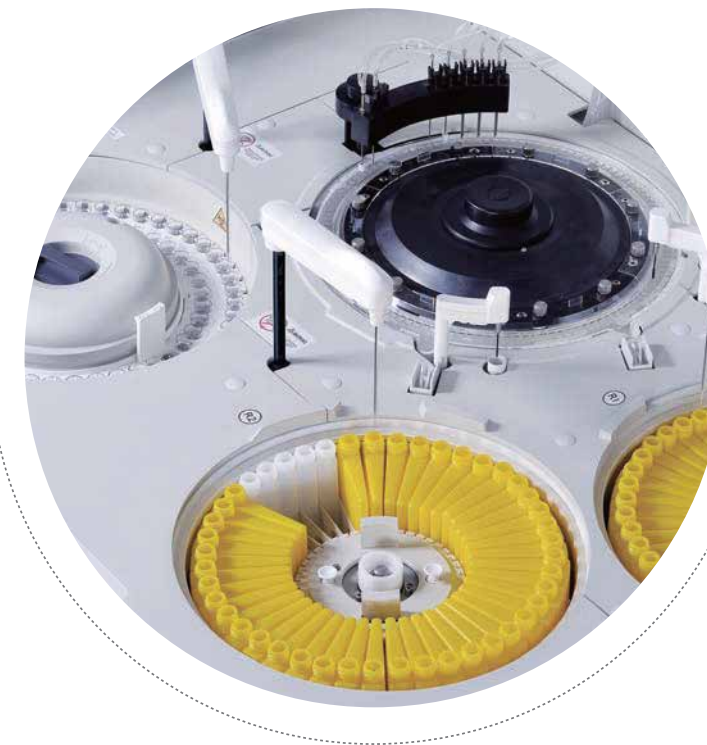
HIGH RELIABILITY

- Large Absorbance Linear Range: Up to 3.6Abs
- High traceability with original reagents,calibrators and controls

SOFTWARE

DiaSys provides friendly software interface and easy-to-use for all staffs.

The result interface supports research results in real time, provides reaction analysis, and print result or transmit to LIS (Laboratory Information System). DiaSys refers to Westgards rules, and generates QC chart and QC statistics for reliable patients results. The monitor interface displays full sample test status real-time.



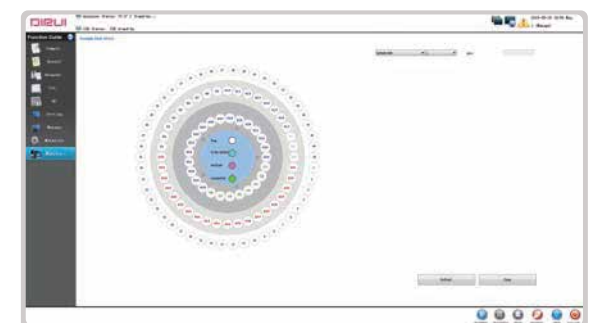
Search result easily by different conditions
check the real time reaction process
Print results and transmit result to LIS



Detect Reagent remain volume
Automatically calculates the remain times.
Online reagent refilling function



The Quality Control generates QC chart
QC statistics and make it easy to identify QC errors.



Display full patient demographics.
View the sample reaction status in real time.